



USERS:

- Have the ability to move forward on their workloads with fewer obstacles to progress



IT ADMINISTRATORS:

- Gain a wide array of hardware and software options that enable the flexibility to adapt to an ever-changing, variety of potential users
- Gain practical remote access tools enabling practical monitoring and operation of devices through a PC on the network



BUSINESS DECISION MAKERS:

- Cultivate an inclusive work environment that supports individual productivity for all employees
- Operate a business where access to information technology is provided to all users so everyone has the opportunity to be productive and excel

Section 508 of the Rehabilitation Act:

Section 508 of the Rehabilitation Act requires that all federal employees and members of the public with disabilities have equal access to information and data as those without disabilities. Canon works hard to provide products that meet and exceed the Section 508 technical standards.

Accessibility efforts, rewarded:

Canon's dedication to working for greater accessibility solutions was recognized with the 2007 Access Award from the American Foundation for the Blind (AFB) for the Canon Voice Operation Kit. The AFB Access Award acknowledges individuals, corporations and organizations working hard to eliminate or substantially reduce inequities faced by people who are blind or visually impaired.

This Canon solution features:

- Canon imageRUNNER device
- Voice Operation Kit and Voice Guidance Kit
- Remote Operator's Software Kit
- Remote UI (User Interface)
- ADF Access Handle
- Braille Label Kit
- Reversed Control Panel Display



1-800-OK-CANON
www.usa.canon.com

Canon U.S.A. Inc.
One Canon Plaza
Lake Success, NY 11042

CANON and IMAGERUNNER are registered trademarks of Canon Inc. in the United States and may also be registered trademarks or trademarks in other countries. IMAGEWARE is a registered trademark of Canon U.S.A., Inc. in the United States and is a trademark of Canon Inc. in certain other countries. IMAGEANYWARE is a trademark of Canon. All other referenced product names and marks are trademarks of their respective owners and are hereby acknowledged. Products shown with optional accessories/equipment. Specifications and availability subject to change without notice. ©2008 Canon U.S.A., Inc. All rights reserved.



“I need a device that can easily be modified to become more accessible. What are my options?”



“I may have low vision, but I still need to make and distribute printed materials regularly.”



“If I could control copy device functions from my PC, it could definitely help improve my productivity.”

ACCESSIBILITY

Access to Everyone

Canon works hard to introduce and refine technologies designed to improve the work lives of a wide range of people.

We're especially proud of the accomplishments we've made in our drive to make increased access and functionality a reality for users with disabilities.

■ Increase accessibility, boost efficiency:

Canon is committed to the continued development of accessibility enhancements for a wide range of users.



For People Who Are Visually and Physically Impaired

Productivity for Every Person Who Commands It



Canon's Voice Operation Kit gives users the power to the control device via spoken commands or simplified tactile input.

The kit consists of software and a speaker/microphone that, when attached to the side of an imageRUNNER, enables users to receive instructions and input commands.

The kit features a speaker, a headphone jack for privacy and a flexible microphone for practical use from a seated position.

Practical Control Panels for Everyone



Naturally, conventional accessibility enhancements come standard on imageRUNNER devices. That means you can expect details such as a nubbed "5" key on the number pad, and concave shaped

keys. The concave button design not only makes keys comfortable for everyday use, but also enables physically impaired users to use a head pointer or other pointing device to press keys without slipping.

Canon also offers improved access to functions such as fax and copy with a **Braille Label Kit** for people who are visually impaired. These transparent peel-and-stick Braille labels easily attach to device hard keys — resulting in an extremely tactile, practical control panel.



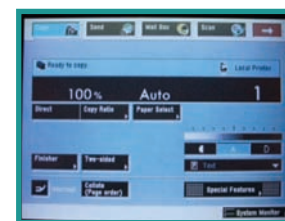
For People Who Are Visually Impaired

Increase Visibility with Reversed Display

All Canon imageRUNNER devices feature color LCD control panels that can reverse to display white text on a black background — boosting clarity for those with low vision.

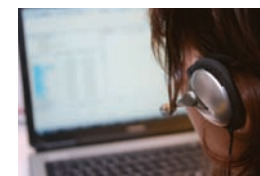


Regular Device UI



Reversed Device UI

Allow Software to Recite Screen Information Aloud



Screen reading technology (such as JAWS) may be combined with Canon imageRUNNER solutions to make software applications more accessible.

By utilizing advanced internal speech synthesizer software applications like this in combination with a computer's sound card, essential productivity software such as e-mail programs, word processors, spreadsheets and Web browsers becomes much more accessible to a wider variety of users with visual impairments.

“Thank you. But I can print my own copies.”

Like the Voice Operation Kit, Canon's **Voice Guidance Kit** uses a small speaker attached to the side of the device, along with speech output software.

Easy-to-identify control panel hard keys enable users to easily navigate controls while speech output guides them along the way. The kit features an easy-to-learn, intuitive interface with responsive controls that help speed users through their tasks — making productivity a smoother experience for all.



For People Who Are Physically Impaired

Operate an Array of Functions Remotely, from a PC

Through the technology inside the **Remote Operators Software Kit**, users can operate all imageRUNNER control panel functions directly from any networked PC. This grants users the independence to make real progress on their workloads without always necessarily needing direct access to the device.

Additionally, by extending the power to control basic functions such as copy, print, scan and fax over a network, the remote interface becomes an ideal way to deliver demos and training.

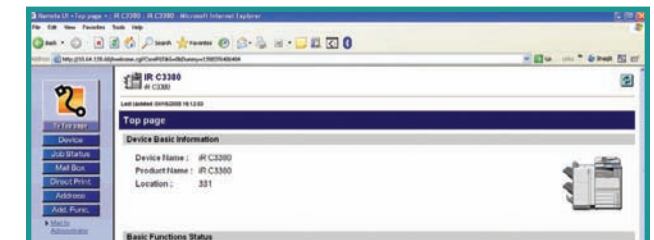


With the Remote Operators Software Kit, a mirror image of the unit's control panel appears on a user's computer screen.

Manage Device Settings and Monitor Job Status Remotely

The **Remote User Interface (RUI)** is preinstalled software on imageRUNNER devices that enables users to view and operate device settings and controls from their PC screens over a network.

With third-party software such as JAWS and screen magnification software, RUI screens can be read aloud or magnified — making it easier to see and operate main device features.



Enable Wider Access with Custom Device Setups



Because the scanner/DADF portion of an imageRUNNER device was designed as a modular section, it can be moved to a nearby tabletop or other accessible situation.

Open-and-Shut Efficiency, Within Reach



This practical **ADF Access Handle** is available so that users can easily close the document feeder from a seated position without other assistance.