

Installing Your Multifunction to Additional Computers on Your Network

PIXMA MP980 / PIXMA MP620

Windows OS

Installing Your Multifunction to Additional Computers on Your Network

PIXMA MP980 / PIXMA MP620

Windows OS

Downloading & Installing the Drivers	3
Downloading the Driver	3
Installing the Driver	6
Setup the Machine and the Computer	8

Downloading the Driver

To use the machine by connecting it to a computer, software including the drivers needs to be copied (installed) to the computer's hard disk. The installation process takes about 20 minutes. (The installation time varies depending on the computer environment or the number of applications to be installed.)

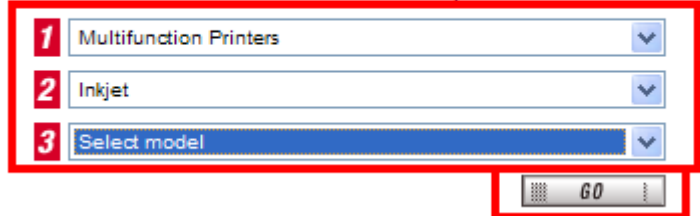
Step One

Go to the Canon USA Download Library
[Click here to go to the Canon USA download library](#)

Step Two

Select **Multifunction Printers** in the first menu dropdown, **Inkjet** in the second and your model in the third. Click **Go**.

PRODUCT MENU
Please choose the model from the dropdown menus below:



1 Multifunction Printers

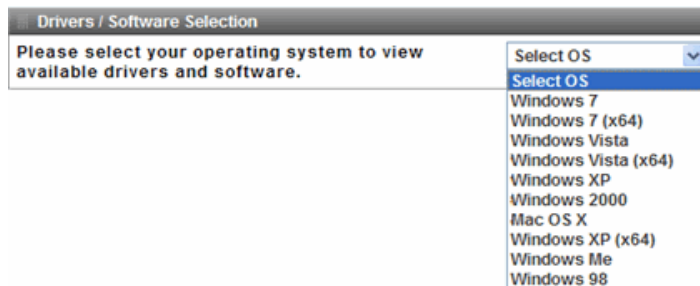
2 Inkjet

3 Select model

GO

Step Three

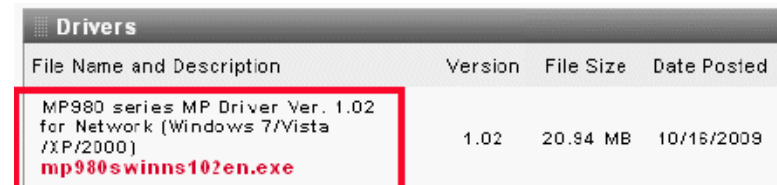
In the **Drivers / Software Selection** section, select your operating system in the **Select OS** dropdown menu.



Step Four

In the Drivers section, click the link* (red printing) for the **MP Driver for Network**

*Name varies by model



The screenshot shows a table titled "Drivers". The table has four columns: "File Name and Description", "Version", "File Size", and "Date Posted". The first row of data is highlighted with a red border. The file name in this row is "mp980swinns102en.exe", which is printed in red text. The other columns for this row are "1.02", "20.84 MB", and "10/16/2009".

File Name and Description	Version	File Size	Date Posted
MP980 series MP Driver Ver. 1.02 for Network (Windows 7/Vista /XP/2000) mp980swinns102en.exe	1.02	20.84 MB	10/16/2009

Step Five

On the next screen, read the information and instructions and click **I Agree - Begin Download**.
Once the file has been downloaded, double-click it to begin the installation process.

IMPORTANT:

- Quit all running applications before installation.
- Log on as the administrator (or a member of the Administrators group).
- Do not switch users during the installation process.
- Internet connection may be required during the installation. Connection fees apply.
- It may be necessary to restart your computer during the installation process. Follow the on-screen instructions. The installation resumes once your computer has restarted.

If the firewall function of your security software is turned on, a warning message may appear that Canon software is attempting to access the network. If such a warning message appears, set the security software to always allow access.

Once the file has been downloaded, double-click it to begin the installation process.

Installing the Driver

NOTE: If a **User Account Control** screen appears, click **Continue** or **Yes** (depending on Windows version) to continue.

NOTE: If the same screen reappears in subsequent steps, click **Continue** or **Yes**.

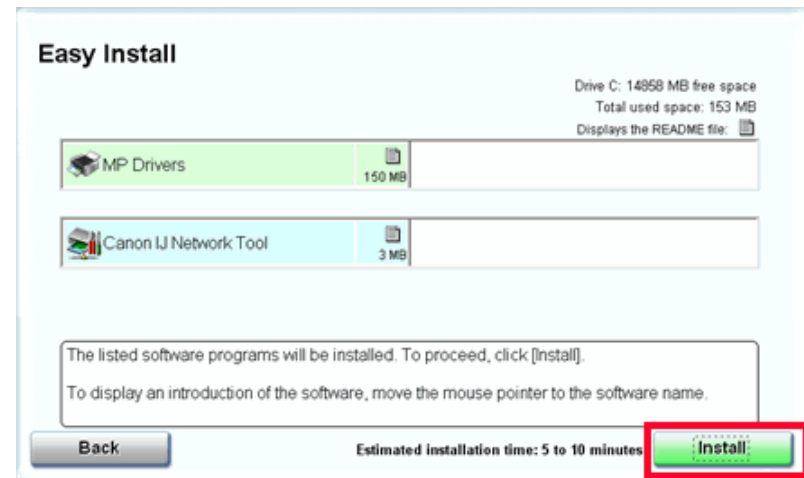
Step One

Click **Easy Install**.



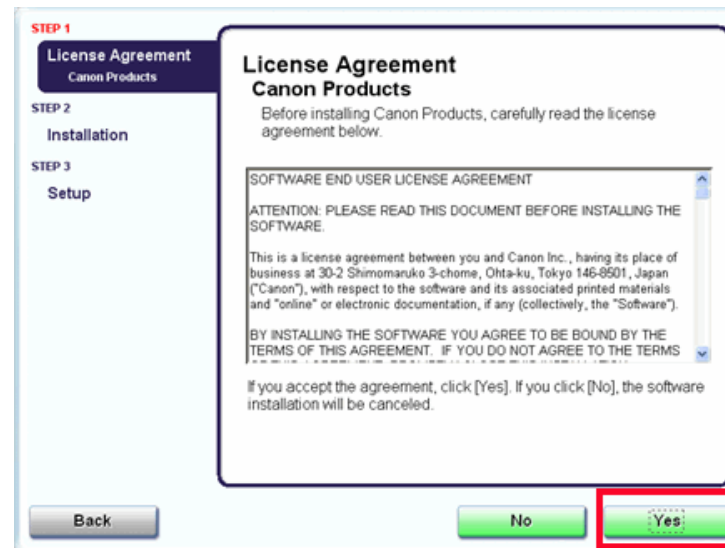
Step Two

Click **Install**.



Step Three

Read the License Agreement screen carefully and click Yes.

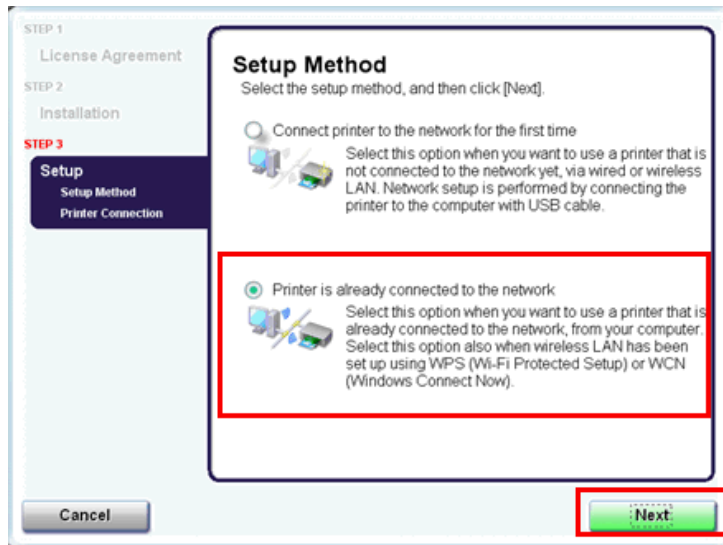


Installation starts. Follow any on-screen instructions to install the software.

Setup the Machine and the Computer

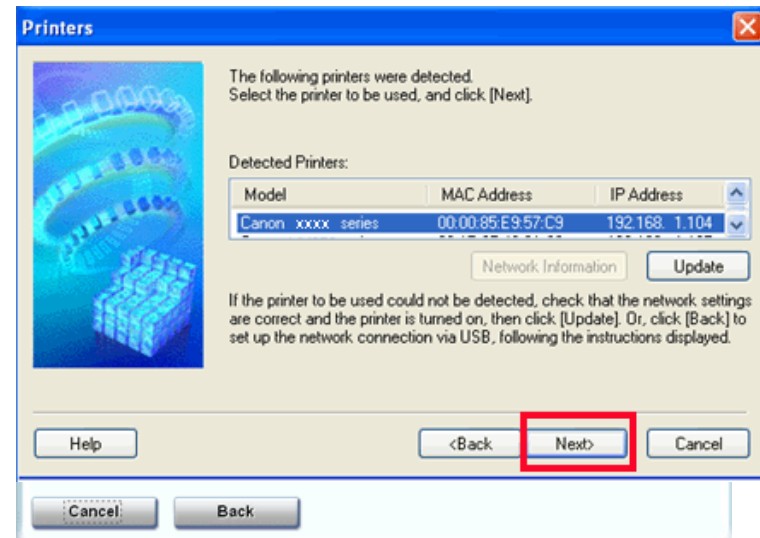
Step One

On the **Setup Method** screen, select **Printer is already connected to the network**, then click **Next**.



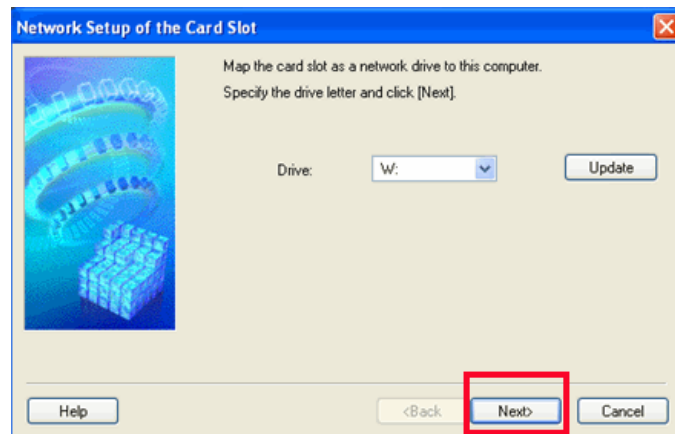
Step Two

When the **Printers** screen appears, make sure that the machine is selected and click **Next**.



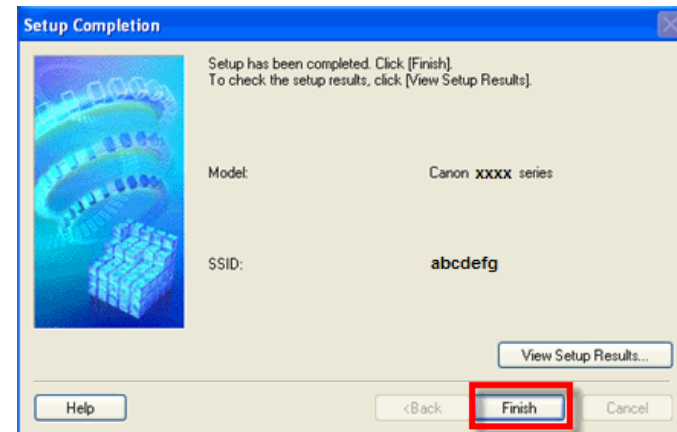
Step Three (Windows 2000/XP Only)

When the **Network Setup of the Card Slot** dialog box appears, specify the drive letter, then click **Next**.



Step Four

When the **Setup Completion** dialog box appears, click **Finish**.



Click **Restart** if the **Restart** window appears and then click **Exit**