

Obtaining Your Network Key

PIXMA MP990 / PIXMA MX640 / PIXMA MP560

Windows OS

Obtaining Your Network Key

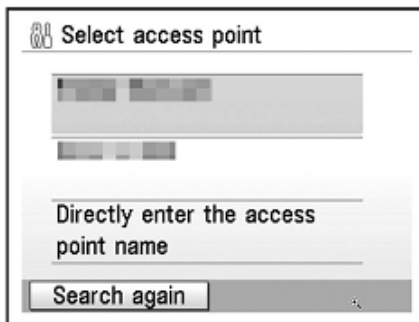
PIXMA MP990 / PIXMA MX640 / PIXMA MP560
Windows OS

| | |
|---|----|
| Introduction | 3 |
| Download the Canon PIXMA Wireless Setup Assistant | 4 |
| Using the Canon PIXMA Wireless Setup Assistant | 6 |
| Troubleshooting | 10 |

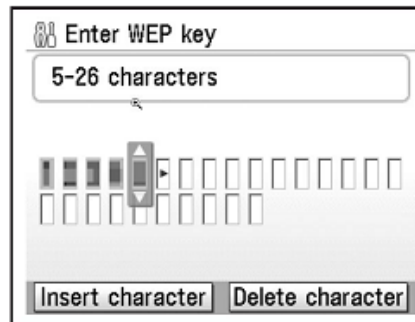
Introduction

If you are unable to proceed to the next step after any of the following screens are displayed when inputting the wireless LAN settings, you may be able to retrieve the access point name / network name (SSID), or the network key (WEP key / passphrase) using the Canon PIXMA Wireless Setup Assistant.

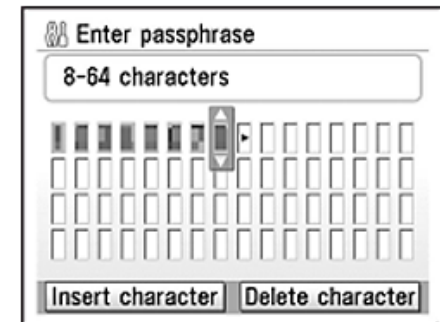
The screen for selecting access point.



The screen for entering WEP key.



The screen for entering passphrase.



NOTE: The Wireless Setup Assistant is supported on the following operating systems only:

- Windows XP SP3 or later
- Windows XP x64 Edition SP3 or later
- Vista (32 & 64 bit)
- Windows 7 (32 & 64 bit)

Download the Canon PIXMA Wireless Setup Assistant

[<< Previous](#)

[Next >>](#)

Download the Canon PIXMA Wireless Setup Assistant

To use the machine by connecting it to a computer, software including the drivers needs to be copied (installed) to the computer's hard disk. The installation process takes about 20 minutes. (The installation time varies depending on the computer environment or the number of applications to be installed.)

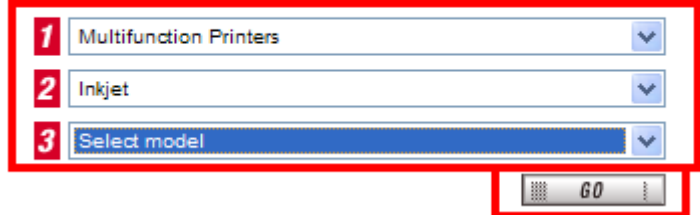
Step One

Go to the Canon USA Download Library
[Click here to go to the Canon USA download library](#)

Step Two

Select **Multifunction Printers** in the first menu dropdown, **Inkjet** in the second and your model in the third. Click **Go**.

PRODUCT MENU
Please choose the model from the dropdown menus below:



1 Multifunction Printers

2 Inkjet

3 Select model

GO

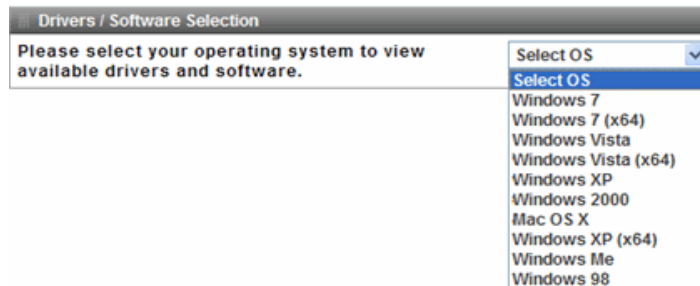
Download the Canon PIXMA Wireless Setup Assistant

[<< Previous](#)

[Next >>](#)

Step Three

In the **Drivers / Software Selection** section, select your operating system in the **Select OS** dropdown menu.



Step Four

In the **Software** section, click the link to download the file **CanonAPChkTool**.



Step Five

On the next screen, read the information and instructions and click **I Agree - Begin Download**

Choose to "Save" the file. **Write down the file name and the location to where the file is being saved.**

Using the Canon PIXMA Wireless Setup Assistant

[<< Previous](#)

[Next >>](#)

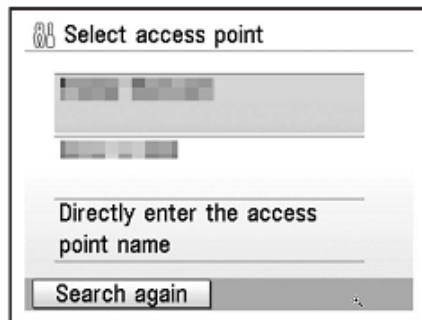
Using the Canon PIXMA Wireless Setup Assistant

Step One

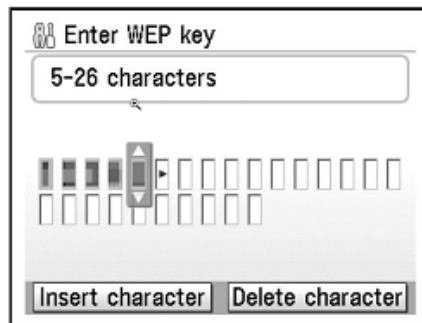
Display the window for selecting access point using the buttons on the printer.

Please refer to the Getting Started Guide if you are unable to display the below window on the LCD screen.

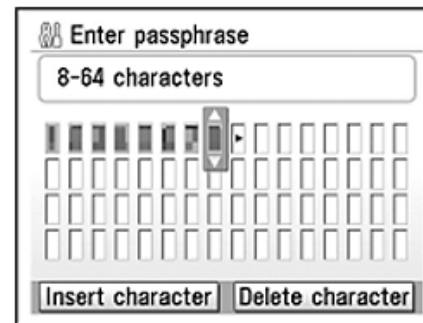
The screen for selecting access point.



The screen for entering WEP key.



The screen for entering passphrase.



Using the Canon PIXMA Wireless Setup Assistant

[<< Previous](#)

[Next >>](#)

Step Two

Double-click the downloaded tool for confirming the Canon PIXMA Wireless Setup Assistant **CNMNPHLP**.



Step Three

Read the License Agreement, and then click **Yes** when you accept the agreement.



Using the Canon PIXMA Wireless Setup Assistant

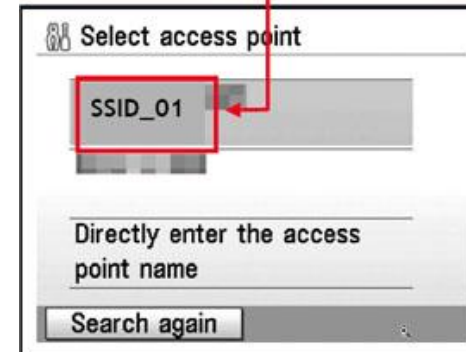
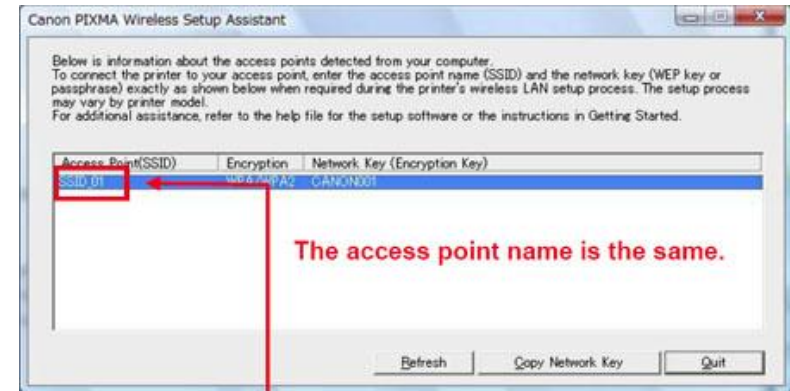
<< Previous

Next >>

Step Four

1. The "**Canon PIXMA Wireless Setup Assistant**" tool is launched.
2. Confirm that the access point names listed in the window are the same as the ones in the Access Points window displayed on the printer unit ([Step One](#)).
3. Then, write down the Network Key of the access point.

NOTE: The Network Key may include the letters A to F in addition to numbers(base 16 number). Write the number down as-is.



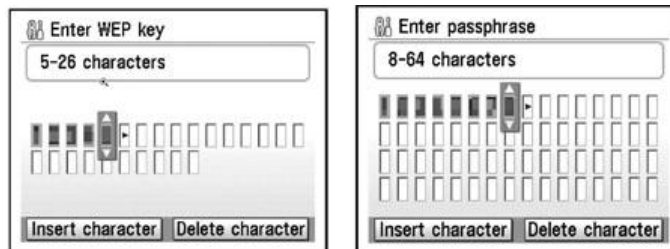
Using the Canon PIXMA Wireless Setup Assistant

[<< Previous](#)

[Next >>](#)

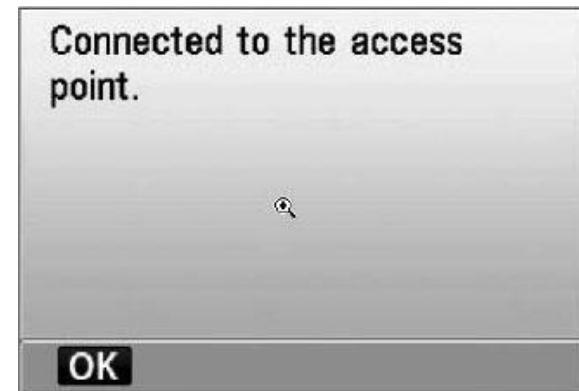
Step Five

1. In the window for selecting access point of the printer unit, select the access point specified in the step 4, then click **OK**.
2. When the window for entering the network key is displayed, enter the key you copied in Step Four.
3. Click **OK**.



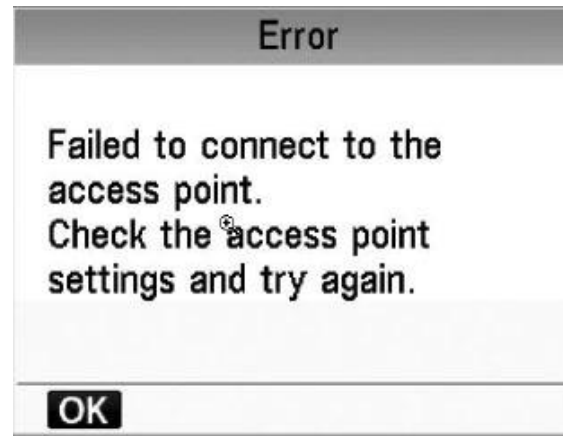
Step Six

When the setup is completed, the "Setup Complete" dialog is displayed. Proceed with the remainder of the setup as described in the Getting Started Guide.



Troubleshooting

If the following error message below is displayed.



The entered network key may not match with the access point you specified.

1. Press the Set button
2. You will return to the screen for entering the network key.
3. Then repeat Steps Six and Seven.