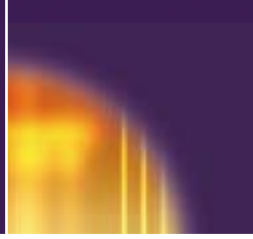


Canon

imageRUNNER™
7200



imageRUNNER™
7200



HIGH-PERFORMANCE MULTIFUNCTIONALITY IS NOW WITHIN YOUR REACH

Who says you can't have it all? With the Canon imageRUNNER™ 7200, you get a high-speed digital copier, network printer, network scanner, and office communications hub, all in one. Now you can copy, print, scan, store, and send your documents to multiple locations utilizing just one device, regardless of your document's form, content, or ultimate destination.

Stop wasting valuable time working around the limitations of your current office equipment. With the Canon imageRUNNER 7200 you won't need to alter your job to fit the capabilities of the machine. The imageRUNNER 7200's extensive feature set will allow you to complete the job exactly as you want it, in as few steps as possible. Whether your document requires basic copying and

finishing, on-line printing and insertion, scanning and archiving, or manipulation and distribution, rely on just ONE device—the imageRUNNER 7200—to get every piece of the job done.

With the new Canon imageRUNNER 7200 you CAN have it all—faster, easier, and more affordably than you could have ever imagined.



copy

Walk Up to a World of Possibilities...

The imageRUNNER 7200 comes standard as a 72-page-per-minute digital copier with a total programmable copy set capacity of 9,999. Up to 100 simplex or duplex originals in sizes from statement to ledger can be fed through the device's automatic document feeder to accommodate large document sets. Documents can be copied onto a wide variety of paper sizes and types, including tabs, transparencies, and card stock. The imageRUNNER 7200 can be equipped with up to six different paper sources for a total of 7,650 letter-sized sheets, so that long copy jobs can run uninterrupted. Automatic paper tray switching and on-the-fly paper reloading further enhance productivity.

As a stand-alone copier, the imageRUNNER 7200 boasts a number of standard features, such as Trayless Duplexing, Proof Print, Sample Set, Pagination, Sheet and Cover Insertion, Image Combination, and Copying onto Tabs, that makes the completion of everyday jobs quicker and easier. To facilitate the production of complex jobs, the imageRUNNER 7200 also has a 10GB Hard Drive as standard. This internal image server hosts a number of unique features such as Job



Standard 100-sheet Automatic Document Feeder

Build, Copy Reservation, Scan-Once-Print-Many, Auto Image Orientation, Forms Storage, and Job Done Notification.

The imageRUNNER 7200 also offers several choices in finishing. Three distinct finishers are available that are designed to handle the applications most common to high-volume departments. From stapling to hole-punching, saddle-stitched booklet-making, booklet-trimming, z-folding, and post-process insertion, the imageRUNNER 7200 can be configured to meet all your document-finishing needs.



...Or Take On the World from Your Desktop

When configured with one of two optional print controllers, the imageRUNNER 7200 becomes a powerful networked device, giving users full access to the imageRUNNER 7200's advanced capabilities right from their desktops. Users can choose either the Canon-designed Network Multi-PDL Printer Kit-B3 or the imagePASS-M1 Print Controller, developed by Canon and Electronics for Imaging. Both enable 2400 x 600 dpi interpolated print resolution, and are designed to integrate seamlessly with your existing network infrastructure.

The Canon-customized controller leverages the standard 250MHz processor embedded into each imageRUNNER 7200 base model. This controller is best suited for text-intensive documents common to the general office environment, and where PCL page description language represents the bulk of jobs sent to the printer.

The imagePASS-M1 Print Controller features an Intel® Pentium® III 500MHz Mobile processor, and is designed for environments in which complex graphics, variable data, or true Adobe® PostScript® files make up the majority of print jobs. An imageRUNNER 7200 equipped with an imagePASS-M1 Print Controller gives users full access to EFI™ print utilities such as WebTools,™ DocBuilder,™ Command WorkStation,™ and Fiery® FreeForm.™

An imageRUNNER 7200, equipped with either the Network Multi-PDL Printer Kit-B3 or imagePASS-M1 Print Controller, can be upgraded to support Canon's Universal Send™ suite, a unique set of features that allows you to distribute scanned documents to multiple destinations in one simple operation.

Both controller choices come with printer driver software that is extremely easy to use, even without prior experience using a network connected device. A graphic image of the imageRUNNER 7200 is displayed in the printer driver window, indicating all currently installed hardware options, paper sizes, and paper levels. If the status of the device changes at any time, this image is automatically updated so that the user is aware of the latest device capabilities.

Using the Page Setup Tab within the driver, users can save frequently used Job Profiles, insert annotations, add watermarks, and send confidential/sensitive documents to the printer as a Secured Print. The imageRUNNER 7200's printer drivers also come with Canon's Page Composer software, a document make-ready tool that allows users to review and manipulate whole documents before printing.

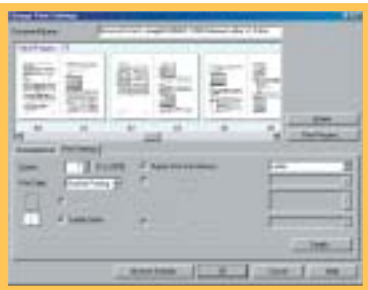
Without any added cost, customers have access to even more powerful capabilities when two imageRUNNER 7200, imageRUNNER 8500, or imageRUNNER 105 devices are connected on a network. Using the Remote Copy feature, a user can scan an original at one of the imageRUNNER devices, and print it on another. And the Cascade Copy feature allows users to split a print job between two different imageRUNNER devices on the network for a combined output speed of up to 177 pages per minute (with the imageRUNNER 105 as a selected device).



The optional imagePASS-M1 Print Controller



Driver Page Setup Tab



Page Composer is a make-ready tool that allows users to review and manipulate whole documents before printing.

Digitize and Organize

Like its predecessors, the imageRUNNER 7200 provides users with tremendous flexibility in converting hard-copy documents to electronic form.

All network-connected imageRUNNER 7200 devices come equipped with Canon's Network ScanGear software. Using a ScanGear-enabled imageRUNNER 7200, users running TWAIN-compliant application software can scan documents from the device for transmission over the network. Scanned images can then be manipulated at the desktop as needed.

Canon's eCopy™ ShareScan™ option can also be configured with the imageRUNNER 7200, allowing users to scan and send their documents via E-mail, I-fax, or to the desktop at the touch of a button. Once documents are scanned to a user's PC, Canon's eCopy Desktop™ Software can then be used to manipulate the images via an extensive group of markups tools. Scanned images can also be run through an OCR program embedded within the software, and then delivered via I-fax or E-mail to their final destinations.

Users can scan and store hard-copy originals directly on the imageRUNNER 7200's hard drive using the device's standard Mail Box function. Up to 100 user Mail Boxes are available for storage, with a total

document capacity of 7,700 pages. Once scanned, documents can be moved between Mail Boxes, combined, renamed, erased, and printed as required. Documents stored in Mail Boxes can be password-protected for security, and accessed either at the imageRUNNER 7200 or at a user's desktop using the Remote UI™ JBIG viewer.

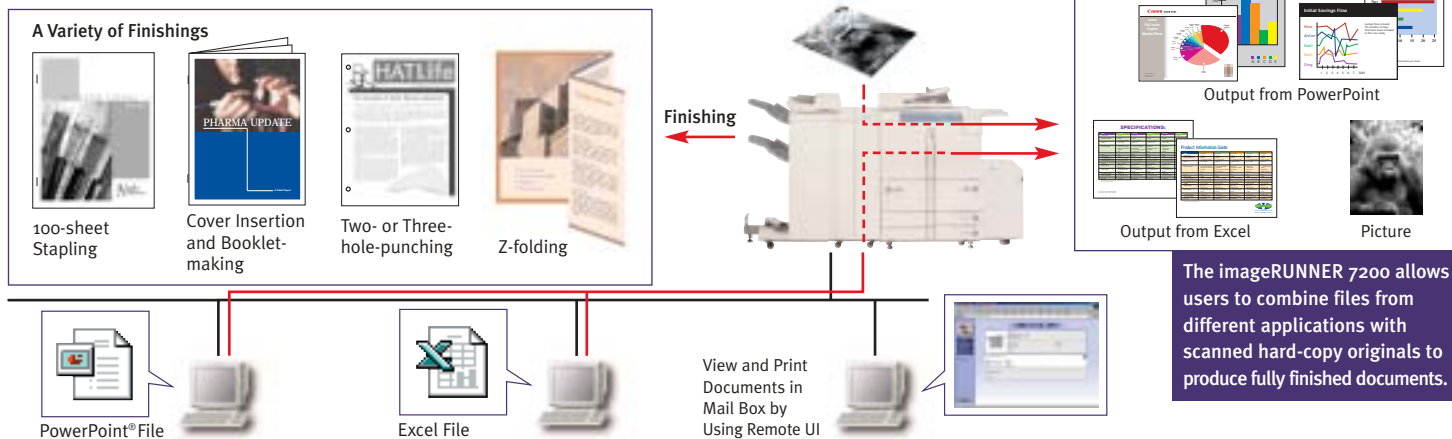
Documents scanned via Universal Send or eCopy ShareScan can be also be stored on the network using Canon's new imageWARE™ Document Manager software. Scanned documents can be stored and organized within an extensive document library and retrieved for later viewing.



Up to 7,700 pages of documents can be stored in the Mail Boxes.

Produce professionally finished documents.

imageRUNNER 7200 POD Solutions



send Break Through the Communication Barriers



Universal Send

Canon's optional Universal Send upgrade, combined with eCopy Desktop Software, takes the imageRUNNER 7200's scanning capabilities even further. Using Universal Send, hard-copy documents can be scanned at the device and delivered to multiple destinations simultaneously. The advanced functions of Universal Send allow users to communicate, manage, and share information as never before. Documents can be distributed through the following "Send" vehicles:

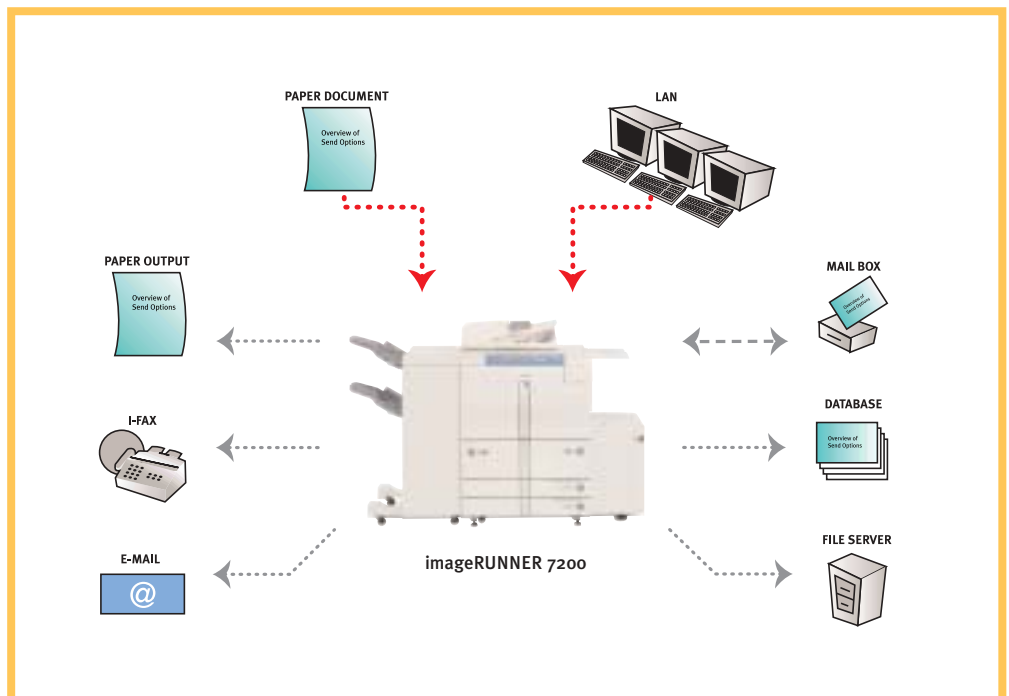
Send via E-mail – Send scanned documents as E-mail attachments in TIFF, Multipage TIFF, or PDF formats.

Send via Internet Fax – Bypass the PSTN and send scanned documents over the Internet as fax transmissions, at no cost.

Send to a File Server – Store scanned documents in a centralized directory for archival or sharing purposes (FTP, Windows,® NetWare®).

Send to a Mail Box – Organize and archive digital documents in 100 Mail Boxes for sharing, merging, printing, or sending at a later time.

Send to a Database (Salutation) – Store digitized information in a centralized database (such as Canon's imageWARE) for enterprise-wide access.



Networking Know-how

The imageRUNNER 7200, like all Canon networked systems, ships with a comprehensive set of utilities designed to simplify device installation and network management for both end-users and administrators:

Remote UI – The imageRUNNER 7200 ships standard with Canon's Remote UI (User-interface) feature. By entering the IP address of the device from a standard web browser, users gain instant access to device status and configuration, job management functions, user Mail Boxes and more—all from a desktop PC, and with no additional software requirements.

NetSpot® Console – NetSpot Console is a web-based utility capable of installing and managing Canon networked systems, including the imageRUNNER 7200, on most customer networks. Through NetSpot Console, network administrators are provided a convenient, platform-independent utility to install and manage Canon devices from anywhere within the enterprise. In addition to basic installation support, NetSpot Console also delivers administrator alerts, notifying administrators of device status conditions such as low toner, paper jams, and others. For added convenience, NetSpot Console is also capable of managing third-party printers complying with the standard Printer MIB, thereby consolidating network device management via one utility.

NetSpot Job Monitor – To manage and track the progress of print jobs, Canon supplies NetSpot Job Monitor. This utility runs as an automated task in the Windows System Tray, and can be configured to report job conditions based on administrator or end-user preferences. Significant to NetSpot Job Monitor is its ability to deliver end-of-job notification to end-users, ensuring that they are always informed of the completion of submitted work.

NetSpot Accountant* – NetSpot Accountant is an optional utility available for the imageRUNNER 7200 that is capable of providing comprehensive job tracking and analysis for cost-accounting and workflow optimization. Using NetSpot Accountant, network administrators can track all activity at the imageRUNNER 7200, including copying, printing, scanning, and billing internal or external clients for device utilization. A wide range of configuration settings are available for NetSpot Accountant, enabling administrators to track device usage in a myriad of ways. NetSpot Accountant is ideal for legal customers, or any customer who desires to account for imageRUNNER 7200 device utilization.

Enterprise-management Integration – In addition to the NetSpot utilities mentioned, Canon also supplies plug-in modules for the most popular enterprise-management applications in use today. Supported applications include Microsoft® Management Console, CA-Unicenter, HP® OpenView,® Tivoli® TME, and BMC Patrol.® Through these plug-ins, Canon permits easy management of the imageRUNNER 7200 and other Canon networked devices from directly within the enterprise-management system console.



Remote User-interface

manage

**Optional utility. Please check with your Canon-authorized dealer for availability.*



imageRUNNER 7200 Specifications

Type: Digital, Multifunction Imaging System
Imaging System: Laser Dry Electrostatic Transfer
Developing System: Dry Monocomponent Toner Projection
Image Server Memory: Standard 192MB RAM + 10GB HDD
First-copy Time: 3.1 Seconds from Platen Glass
 4.3 Seconds from ADF
Warm-up Time: 6 Minutes or Less
Acceptable Originals: Sheets, Books, 3-dimensional Items
Max. Original Size: 11" x 17" (Ledger)
Max. Copy Size: 11" x 17" (Ledger)
Min. Copy Size: 4-1/8" x 5-7/8"
Max. Copy Reservation: 5 Jobs
Copy/Scanning Resolution: 600 dpi x 600 dpi
 1200 dpi x 600 dpi Interpolated
 600 dpi x 600 dpi
Printing Resolution: 2400 dpi x 600 dpi Interpolated
Halftone: 256 Gradations of Gray
Copy Speed: 72 cpm (Letter)
 36 cpm (Ledger)
Duplexing: Standard Automatic Trayless
Magnification Reduction/Enlargement: 25% to 400% in 1% Increments
Paper Supply Standard: Dual Front-loading Trays (1,500 Sheets Each)
 Dual Front-loading Cassettes (50 Sheets Each)
 50-sheet Stack Bypass
 3,500-sheet Paper Deck-M1 (Total: 7,650 Sheets)
Optional: 3,500-sheet Paper Deck-M1 (Total: 7,650 Sheets)
Multiple Copies: 1 to 9,999
Paper Weights: 17 lb. Bond to 110 lb. Index (All Paper Sources)
Mail Box: 100 (7,700 Pages/Letter)
Dept. ID: 1,000 (7-digit IDs and Passwords)

Supplies
Drum: Amorphous Silicon – Estimated Yield: 5,000,000 Impressions
Maximum Duty Cycle: 350,000 Impressions per Month
Toner: Magnetic Positive Toner – Estimated Yield: 33,000 Images

ACCESSORIES

Automatic Document Feeder
Acceptable Originals: Statement to Ledger
Scanning Speed: 55 ppm (Letter)
Capacity: 100 Sheets (All Sizes/20 lb.)
Paper Weights: 13 lb. Bond to 32 lb. Index

Finisher-K1N/K2N (Optional)
Number of Trays: 2 Trays
Tray Capacity: 1,000 Sheets (All Sizes)
Top Tray: Offset Stacking

Lower Tray: 2,000 Sheets (Letter)
 1,000 Sheets (11" x 17", Legal)
Staple Position: 1 - Any Corner
 2 - Side Margin
Max. Stapling Capacity: 100 Sheets (Letter/Statement)
 50 Sheets (Letter-R/Legal/11" x 17")
Hole-punch (K2N Only): 3 Holes (11" x 17", Letter)
 2 Holes (Legal, Letter-R)

Saddle Finisher-K3N (Optional)
Number of Trays: 3 Trays
Tray Capacity: 1,000 Sheets (All Sizes)
Top Tray: Offset Stacking
 2,000 Sheets (Letter)
Lower Tray: 1,000 Sheets (11" x 17", Legal)
 Offset Stacking
 30 Sets

Saddle-stitch Tray: 1 - Any Corner
Staple Position: 2 - Side Margin
Max. Stapling Capacity: 100 Sheets (Letter/Statement)
 50 Sheets (Letter-R/Legal/11" x 17")
Hole-punch: 3 Holes (11" x 17", Letter)
 2 Holes (Legal, Letter-R)

Saddle-stitch Capabilities
Saddle-stitch Paper Sizes: 11" x 17", Letter
Stapling Capacity: 15 Sheets (60 Pages)
Folding: V-folding Standard

Paper Deck-M1 (Optional)
Paper Capacity: 3,500 Sheets
Paper Size: Letter
Paper Weights: 17 lb. Bond to 110 lb. Index

Document Insertion Unit-B1 (Optional)
Paper Sizes: Letter-R to 11" x 17"
Paper Weights: 17 lb. Bond to 110 lb. Index
Feeder Capacity: Letter, Letter-R: 100 Sheets
 Legal, 11" x 17": 50 Sheets

Paper Folding Unit-C1 (Optional)
Paper Sizes: 11" x 17" Only
Paper Weights: 17 lb. Bond to 22 lb. Bond
Fold Type: Z-fold

Booklet Trimmer-A1 (Optional)
Sheet Capacity: 30 Sheets (60 Pages)
Stack Capacity: 2,000 Pages
Dust Capacity: 2,000 Pages

Network Multi-PDL Printer Kit-B3 (Optional)
PDL Support: PostScript 3 Emulation
 PCL[®] 5e, PCL[®] 6
Interface Connections: RJ-45 (10/100Base-T)
 IEEE 1284
 Token Ring (Optional Card)
Protocol Stacks: Ethernet
 IPX/SPX[™]: 802.2, 802.3
 Ethernet II, 802.2 SNAP
 TCP/IP
Network OS: AppleTalk[®] Phase II
 Novell[™] NetWare v3.2, 4.1, 4.11, 4.2, 5, 5.1
 Windows[®] 95/98/Me
 Windows NT[™] 4.0/2000/XP
 Solaris[™] 1.x, 2.5 or Later*
 Apple[®] System 7.5 or Higher
 NDPS, Port 9100, IPP
Print Service: Network ScanGear, Remote UI,
Additional Functions Supported: NetSpot, Universal Send

Canon imagePASS-M1 Print Controller (Optional)
Hardware: External Stand-alone Controller
Processor: Intel Mobile Pentium III 500MHz
Memory: 128MB DIMM
Storage: 10.2GB Hard Disk Drive
PDL Support: Adobe PostScript 3
 PCL 5e, PCL 6, P/L
 RJ-45 (10/100Base-T)
 IEEE 1284
 Token Ring (Optional Card)
Protocol Stacks: Ethernet
 IPX/SPX: 802.2, 802.3
 Ethernet II, 802.2 SNAP
 TCP/IP
Network OS: AppleTalk: 802.2 SNAP and AppleTalk Phase II
 Novell NetWare v3.2, 4.1, 4.11, 4.2, 5, 5.1
 Windows 95/98/Me
 Windows NT 4.0/2000/XP
 Solaris 1.x, 2.5 or Later*
 Apple System 8.6 or Higher
 NDPS, Port 9100, IPP

Print Service: Network ScanGear, Remote UI, Universal Send,
Additional Functions Supported: NetSpot (except Job Monitor)

Additional Functions Standard: Command WorkStation, Fiery Downloader,[™]
 Fiery Link,[™] WebTools

Send Expansion-A1 SET (for Universal Send Support)
Sending Method: E-mail, I-fax, Database (Salutation), File Server
 (IPX, FTP, SMB)
Address Book Capacity: Maximum 1,800
File Format: TIFF, PDF, MTIFF
Sending Size: Statement to Ledger
Scan Density: 200 dpi, 300 dpi, 400 dpi, 600 dpi

Dimensions Table	Dimensions (H x W x D)	Weight	Power
imageRUNNER 7200 Main Unit	46-1/8" x 30-1/8" x 31-3/8" (1171mm x 764mm x 795mm)	602 lb. (273kg)	208V, 60Hz, 12A
Finisher-K1N	39-1/4" x 26-1/4" x 29-1/8" (995mm x 667mm x 738mm)	141 lb. (64kg)	Directly from Main Unit
Finisher-K2N	39-1/4" x 26-1/4" x 29-1/8" (995mm x 667mm x 738mm)	145 lb. (66kg)	Directly from Main Unit
Saddle Finisher-K3N	39-1/4" x 31-5/8" x 29-1/8" (995mm x 803mm x 738mm)	280 lb. (127kg)	Directly from Main Unit
Paper Deck-M1	22-5/8" x 12-3/4" x 23" (574mm x 323mm x 583mm)	90.3 lb. (41kg)	Directly from Main Unit
Document Insertion Unit-B1	5-5/8" x 22-1/8" x 23" (144mm x 561mm x 584mm) (with Auxiliary Tray Opened)	35 lb. (16kg)	Directly from Main Unit
Paper Folding Unit-C1	39-1/4" x 7-1/4" x 26-5/8" (995mm x 184mm x 675mm)	108 lb. (49kg)	Directly from Main Unit
Booklet Trimmer-A1	22" x 44" x 24" (560mm x 1118mm x 610mm)	149 lb. (68kg)	120V, 3A
imagePASS-M1 Print Controller	14" x 6-3/8" x 11" (355mm x 162mm x 279mm)	11.6 lb. (5.3kg)	110-240V, 1A

As an ENERGY STAR[®] Partner, Canon U.S.A., Inc. has determined that this product meets the ENERGY STAR[®] guidelines for energy efficiency, except when attached to the optional Token Ring Adapter on the Network Multi-PDL Printer Kit-B3 or the optional imagePASS-M1 Print Controller. The ENERGY STAR name is a registered trademark of the U.S. Environmental Protection Agency. Intel and Pentium are registered trademarks of Intel Corporation. Adobe and PostScript are registered trademarks of Adobe Systems Incorporated. Apple is a trademark of Apple Computer, Inc., registered in the U.S. and other countries, and AppleTalk is a registered trademark of Apple Computer, Inc. Solaris is a trademark of Sun Microsystems, Inc. in the United States and other countries. Fiery is a registered trademark and EFI, WebTools, Fiery Downloader, Fiery Link, DocBuilder, Command WorkStation and FreeForm are trademarks of Electronics for Imaging, Inc. eCopy, ShareScan, and Desktop are trademarks of eCopy, Inc. Windows, Windows NT, PowerPoint, and Microsoft are registered trademarks of Microsoft Corporation in the United States and/or other countries. NetWare and Novell are registered trademarks, and IPX/SPX is a trademark of Novell, Inc. HP, PCL, and OpenView are registered trademarks of Hewlett-Packard Company. Tivoli is a registered trademark of Tivoli Systems Inc. in the United States, other countries, or both. Patrol is a registered trademark of BMC Software, Inc. Canon and NetSpot are registered trademarks and Canon Know How, IMAGERUNNER, and the GENUINE logo are trademarks of Canon Inc. IMAGEWARE, Universal Send and Remote UI are trademarks, and IMAGEANYWARE is a service mark of Canon U.S.A., Inc. All other terms and product names may be trademarks or registered trademarks of their respective owners and are hereby acknowledged.

Specifications are subject to change without notice.

0027W662

0302-iR7200-100M



PRINTED ON RECYCLED PAPER IN THE U.S.A.



*Please check with your local Canon-authorized Dealer for availability.

▲The Document Insertion Unit-B1, the Paper Folding Unit-C1, and the Booklet Trimmer-A1 can only be used with the Saddle Finisher-K3N.

■The imageRUNNER 7200 is not ENERGY STAR[®] compliant when attached to the optional Token Ring Adapter on the Network Multi-PDL Printer Kit-B3 or the optional imagePASS-M1 Print Controller.

Canon KNOW HOW[™]

1-800-OK-CANON
 www.usa.canon.com

Canon U.S.A., Inc.
 One Canon Plaza
 Lake Success, NY 11042