

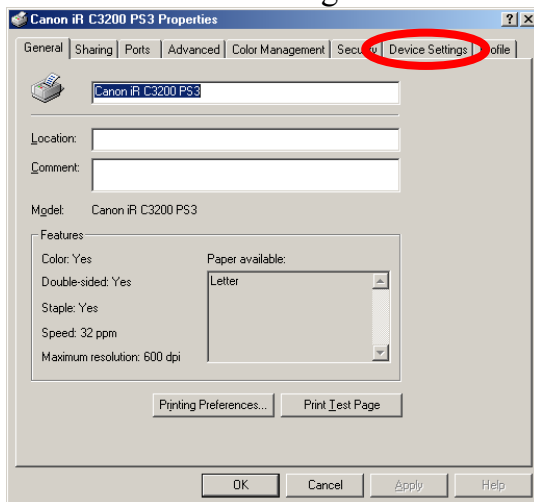
Job shop 2-3 (10 minutes)

Objectives of this job shop:

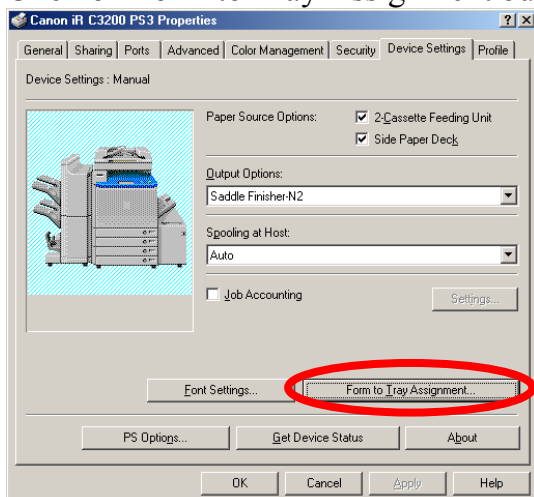
To be able to print using tab paper from the driver

Hint: Since the tab paper can only be fed from Stack Bypass, single reverse tab paper cannot be used. The tab paper must be **single forward**.

1. Go to the printer and put some tab paper in Stack Bypass
2. Press Letter on C3200 LCD panel and press Next
3. Select Tab paper and press Done
4. Go to Windows Start menu and choose Settings
5. Open Printers folder
6. Select Canon iR C3200 PS3's Properties
7. Click on Device Settings tab



8. Click on Form to Tray Assignment button



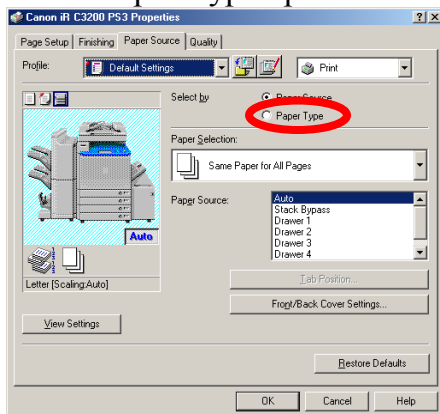
9. Making sure that Stack Bypass is highlighted and Paper Size is Letter, select Tab Paper by scrolling down the Paper Type list

Hint: In order to print to Tab paper, it is necessary to select Tab Paper in the Form to Tray Assignment dialog box before using this option. Otherwise, the option of printing to Tab paper is not available from the print driver.

10. Click OK to close Form to Tray Assignment
11. Click OK to close Properties window
12. Open Word document called “[tabs.doc](#)”
13. Go to File menu and select “Print...”, and change the current printer to Canon iR C3200 PS3.
14. Click on Properties
15. Click on Paper Source tab.



16. Select Paper Type option



17. Choose Tab Paper from Paper Type list. As soon as you select “Tab Paper”, Conflict Information dialog will appear. Click on OK.

