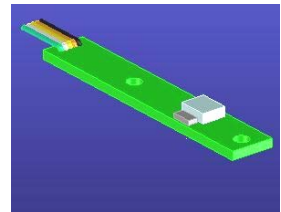
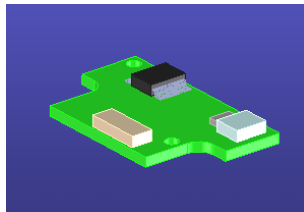
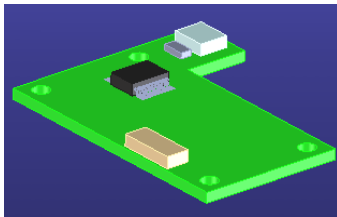


Chip Mount Optical **Linear** Encoders



-PCB Custom Design Available

We can provide you with any PCB you require!



-Easy Alignment

Alignment Tolerance is 1mm +/-0.3mm

-High Resolution

0.08um at Maximum

-Ultra Small



- Competitive Price

CANON U.S.A., Inc Encoder Gr.

http://www.usa.canon.com/html/industrial_encoders/index.html

New York Office

Address: One Canon Plaza Lake Success
NY, 11042-1198 U.S.A.

Tel: 1-516-328-4611

Fax: 1-516-328-4601

E-Mail: encoder@cusa.canon.com

San Jose Office

Address: 3300 North First Street San Jose
CA, 95134 U.S.A

Tel: 1-408-468-2227

Fax: 1-408-468-2219

E-Mail: encoder@cusa.canon.com

CANON Inc. (Japan)

<http://www.canon.com/optoelectro/index.html>

Address: 20-2, Kiyohara-Kogyodanchi,
Utsunomiya-shi, Tochigi, 321-3292 Japan

Tel: 81-28-667-5164

Fax: 81-28-667-9587

E-Mail: cb-admin-kpc@list.canon.co.jp

Canon
*image*ANYWARE

Customers' Requirement Sheet for SR **Linear** Encoders

	Questionnaire	Ans.	Customer's requirement
Technical Questions			
Scale (Linear)			
1	Length	15-1000mm	
2	Material	Film or Glass	
3	Z phase (Index Signal) required	Yes or No	
4	How many Z phases	1 or 2	
5	Where Z phase	center or Edge	
6	Length for Grating Pitch	μm	
Head			
7	Speed	(m/sec)	
8	Frequency Response	(Hz)	
9	Maximum Resolution	(μm)	
10	Type of Interpolator	40-1000	
11	type of output signal	TTL or Line driver	
12	Original PCB Board Required	Yes or No	
	Any Questions		

If you have any questions, please give us a call.

Basic Specifications

Light Source : LED(650nm)
Working Distance : 1mm +/-0.3mm
Output Signal : A,B,Z TTL (Custom-designing available)

Head

Interporation Rate (Selectable)	SR-P01AZ		SR-P40		SR-P64		SR-P1000	
	Resolution (μm)	Max. Response speed (m/Sec)	Resolution (μm)	Max. Response speed (m/Sec)	Resolution (μm)	Max. Response speed (m/Sec)	Resolution (μm)	Max. Response speed (m/Sec)
1000	-	-	-	-	-	-	0.08	1.5
800	-	-	-	-	-	-	0.10	2.0
400	-	-	-	-	-	-	0.20	4.0
200	-	-	-	-	-	-	0.40	4.0
100	-	-	-	-	-	-	0.80	4.0
64	-	-	-	-	1.25	4.0	-	-
40	-	-	2.00	4.0	-	-	-	-
Analog Waves	80.00	4.0	-	-	-	-	-	-

Linear Scale

	Film Scale	Glass Scale
Grating Pitch	80 μm	80μm
Material	Multi Layer PET Film	Glass
Effective Length	15-1000 mm	15-200mm

Environmental Conditions

<Head>

Operating Temperature : 0 to 60°C
Storage Temperature : -20 to 70°C
Humidity : 90% max.
Vibration : 3G, 20-250Hz
Shock : 30G, 11msec

<Scale>

Operating Temperature : 0 to 60°C (glass)
Storage Temperature : -20 to 70°C(glass)
Humidity : 90% max.