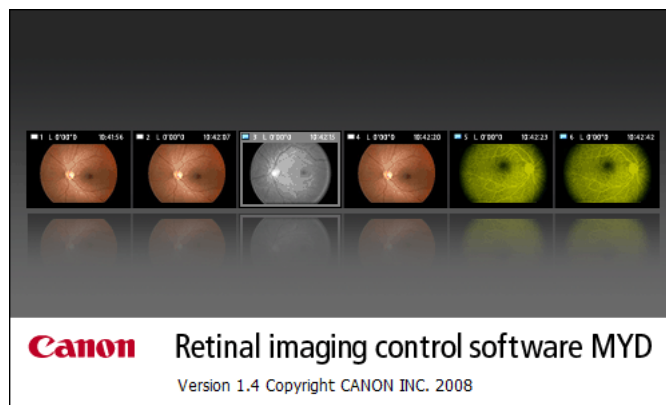


Retinal imaging control software MYD (CF-1) Version 1.4



This manual describes the new features of Retinal imaging control software MYD (CF-1) Version 1.4. Be sure to read this manual in conjunction with the Operation Manual for Version 1.3.

Contents

1. Software operating environment (see page 2)
2. Setting access rights for the storage folder (when using Windows Vista) (see page 3)
3. Storage (see page 4)

Note: Please ask the distributor or Canon representative where you made the purchase to install this product.

1. Software operating environment

For details on the system, please contact a Canon representative or distributor.

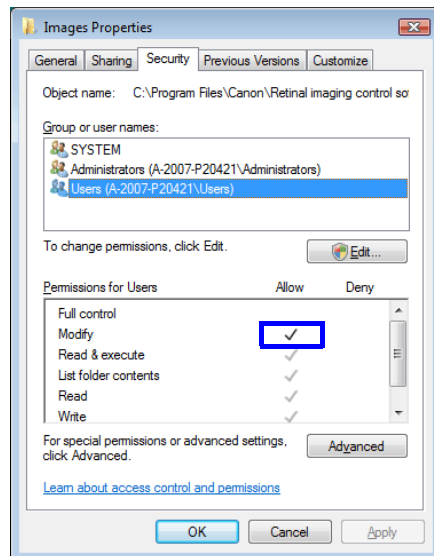
Hardware or software	Specifications
CPU	Windows XP: Pentium 4 2.2 GHz or above (Core2 Duo 2.4 GHz or above recommended) Windows Vista: Core2 Duo 2.4 GHz or above
RAM	Windows XP: 1 GB or more (1.5 GB or more recommended) Windows Vista: 2 GB or more
Display	Screen resolution: XGA (1024 × 768 pixels) or higher [SXGA (1280 × 1024 pixels) or higher is recommended]
	Screen colors: 24 bits or more
Keyboard	
Mouse	Microsoft Mouse or compatible mouse
Interface	USB 2.0 (for communicating with EOS digital camera)
	USB 1.1: RS-232C Emulation (for communicating with the fundus camera)
	RS232C (for the magnetic card/barcode reader)
Operating system	Microsoft Windows XP Professional SP2/SP3 [US]* Microsoft Windows Vista Business SP1 [US]* * This software does not support x64 (64-bit version).
Software	Microsoft .NET Framework Version 2.0
	SQL Server 2005 Express Edition SP2
	Canon Easy-PhotoPrint EX (for printing the images)

2. Setting access rights for the storage folder (when using Windows Vista)

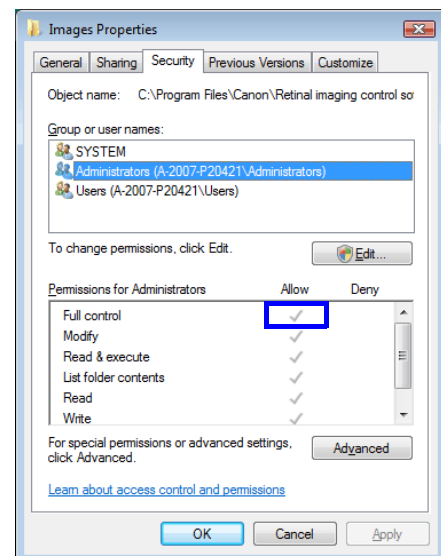
Be sure to set the access rights for the storage folder to be used under the Windows Vista operating environment in the following cases.

- When changing the storage directory for image data to a folder other than the default folder (\Database\Images) created at time of installation
- When using a study file for list input (such as ccrhis.his)

- 1 Open the Properties screen for the storage folder.
- 2 Select the Security tab.
- 3 Open the Permissions screen.
Select a group name or user name, and click [Edit].
- 4 After setting access control permissions as given below, click [OK].
 - Users group: Modify
 - Administrators group: Full control



Users group



Administrators group

3. Storage

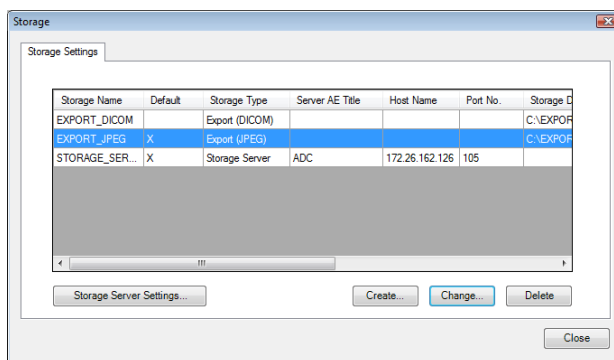
Export (JPEG) has been added to the Storage screen. This allows images to be transferred in JPEG file format.

3.1 Storage

Click the Storage icon to display the Storage screen.

The registered DICOM server storage locations and the export locations for DICOM files and JPEG files are displayed in a list, where entries can be added, edited, and deleted.

To exit the screen, click [Close].



Storage screen

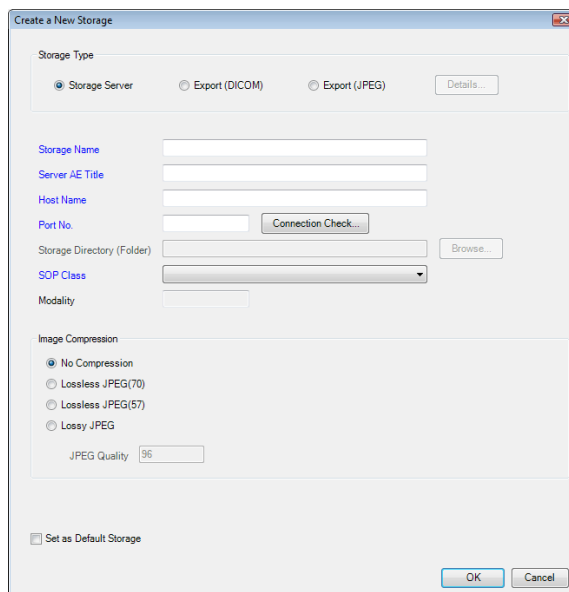
3.1.1 Registering the storages

Up to ten storages can be registered, but up to two storages only can be set as the default storages.

Also, up to two storages only can be set as the storages in a single transfer.

1 Display the Create a New Storage screen.

Click [Create...].



Create a New Storage screen

2 Select the Storage Type.

To output to a DICOM storage server, select **Storage Server**. To export a DICOM file, select **Export (DICOM)**. To export a JPEG file, select **Export (JPEG)**.

3 Select the settings for the storage.

If **Storage Server** is selected under **Storage Type**, set the Storage Name, Server AE Title, Host Name, Port No., and SOP Class. If **Export (DICOM)** is selected, set the Storage Name, Storage Directory (Folder), and SOP Class. If **Export (JPEG)** is selected, set the Storage Name and Storage Directory (Folder).


Item	Function
Storage Name	Input the name using not more than 64 characters. Upper-case or lower-case letters are recognized as different for the registration.
Server AE Title	Input the title using not more than 16 alphanumeric and symbols. The backslash (\) cannot be input.
Host Name	Input the IP address or host name in 32 or less alphanumeric and symbols.
Port No.	Input a number from 0 to 65535.
[Connection Check...]	Click this to check the connection with the storage server.
Storage Directory (Folder)	Click [Browse...] to open the Browse For Folder screen and set the folder where the file is stored.
SOP Class	Click <input type="checkbox"/> , and select the class from the list.
Modality	The modality which corresponds to the SOP Class is displayed.

4 Set the Image Compression.

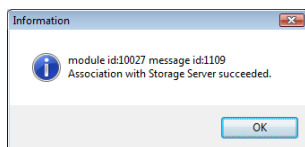
Select one of the methods.

When **Lossy JPEG** has been selected, input a number from 1 to 100 for the **JPEG Quality**.

“100” represents the best image quality.

 MEMO	<p>Lossless JPEG</p> <p>The numeral following Lossless JPEG represents the UID of the transfer syntax.</p> <p>Lossless JPEG (70): 1.2.840.10008.1.2.4.70</p> <p>Lossless JPEG (57): 1.2.840.10008.1.2.4.57</p>
---	---

- 5** Check the connection with the server. (When Storage Server has been selected)
- When Storage Server has been selected as the Storage Type, click [Connection Check...]. The Information screen is displayed if the connection has been made properly. When [OK] is clicked, the Information screen is closed.



Information screen



When the Warning screen is displayed

Check the following points if the Warning screen is displayed.

- The network is functioning properly.
- The server is operating properly.

- 6** Set the storage to the default.
- To set as the default storage, check Set as Default Storage. However, because a maximum of two default storages can be set, it cannot be checked if two storages are already set.
- 7** Register the storages.
- Click [OK].

3.1.2 Advanced export settings (when Export is selected for the storages)

Click [Details...] on the Create a New Storage screen.

The Export Settings screen is displayed.

On this screen, the settings are made for creating directories for storing images, file names, and resizing. After the settings are complete, click [OK].

Export Settings screen

Item	Function
Create Directory (Folder)	Check this to set the storage folder name as the Storage Date or Study Date.
Filename	When [Saving Datetime] is checked: “yyyyMMddhhmmssfff.jpg(.dcm)” (Year, month, day, hour, minute, second, and millisecond when the file was stored.) When [Study Datetime + Study ID + ...] is checked: “yyyyMMddhhmmssEEEESSIIIitt.jpg(.dcm)” EEEE: Study ID SS: Series number III: Instance number itt: Study transfer count
Add Patient Info. to the filename	Patient information selected by the radio buttons (Patient ID, Accession No., Patient Name) are added to the start of the file name. The file name is changed to “Patient information” + “_” + “file name.” Only the file name is used when there is no selected patient information.
Resize (with fixed aspect ratio)	This can be set only when Export (JPEG) is selected. The image size can be modified with a fixed aspect ratio. [Ratio]: Click ▼ to specify the percentage that the width and height are reduced compared to the original image. [Size (Width)]: Click ▼ to select the width of the image after it is reduced in size.

