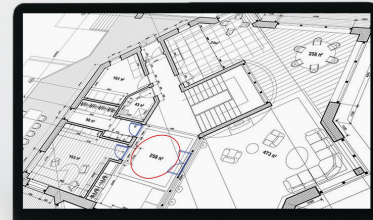




## imagePROGRAF TC-20

Whatever Your Office Type—Small,  
Home, Business, or Temporary—  
Canon's Got You Covered.



### Automatic Sheet Feeder

Load up to 100 sheets of letter-sized plain paper or 50 sheets of 11" x 17" paper for faster printing. **And the TC-20 offers *Spindless Roll Feeding*, too!** The Automatic Sheet Feeder ships standard with the TC-20.



### Media Handling

From roll-fed to cut-sheet paper, you get the versatility to print 24"-wide output as well as letter, 11" x 17", and more, directly from your home office.



### Print More

The imagePROGRAF TC-20 ships standard with 280 ml of ink—70 ml per ink bottle—the **most in its class!**



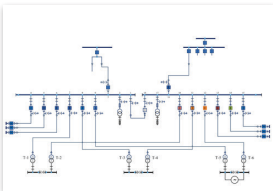
### Environmentally Friendly

EPEAT Gold certified, the TC-20 has the lowest power consumption of any imagePROGRAF printer to date.



### Excellent Print Quality

The four-color pigment ink system provides crisp text and vibrant graphics plus highlighter and water resistance.



### PosterArtist

Easily create posters and flyers from a free, web-based, template-driven poster creation application.



### Easy to Fill

Ink bottles are keyed so they only fit and fill the intended color ink tank. The design helps to create a spill-free process that makes re-filling a breeze.



### Easy to Use

24" large-format printer with full frontal access that uses minimal workspace. Plus, Wi-Fi® compatibility allows you to print from almost anywhere in the office.





## imagePROGRAF TC-20

### SPECIFICATIONS

|                                    |   |
|------------------------------------|---|
| <b>Print Head</b>                  | PF-08   |
| <b>Technology</b>                  | FINE (Photolithography Inkjet Nozzle Engineering)   |
| <b>Print Resolution (Max.)</b>     | 2400 x 1200 dpi   |
| <b>Line Accuracy*</b>              | ±0.1% or Less   |
| <b>Number of Nozzles</b>           | <b>Black:</b> 1,280 Nozzles<br><b>C/M/Y:</b> 1,024 Nozzles Per Color  |
| <b>Ink Type</b>                    | <b>Pigment:</b> Cyan (C), Magenta (M), Yellow (Y), Black (BK)   |
| <b>Ink Bottle</b>                  | <b>Shipped with Printer:</b> C, M, Y, BK, (70 ml per bottle)<br><b>Replacement:</b> PFI-050 (70 ml)   |
| <b>Ink Supply Method</b>           | Tubing System   |
| <b>Printer RAM</b>                 | 1 GB  |
| <b>Media Feed</b>                  | <b>Roll Feed:</b> One Roll, Top-Loading, Front Output<br><b>Cut Sheet:</b> Automatic Sheet Feeder, Top-Loading, Front Output  |
| <b>Media Width</b>                 | <b>Roll Feed:</b> 12" - 24"<br><b>Cut Sheet:</b> 8.3" - 12"   |
| <b>Printable Margins</b>           | <b>Roll Feed:</b> All Sides: .2" (5 mm); Some Photo Modes: Top/Bottom: 30 mm;<br><b>Cut Sheet:</b> All Sides: .2" (5 mm)  |
| <b>Media Cutter</b>                | Rotary Cutter   |
| <b>Media Thickness</b>             | 0.08 mm - 0.28 mm   |
| <b>Media Core Size</b>             | Internal Diameter of Roll Core: 2"  |
| <b>Maximum Roll Outer Diameter</b> | 4.3" (110 mm)   |
| <b>Printing Software Utilities</b> | imagePROGRAF Printer Driver for Windows/Mac, Apple Air Print, Direct Print Plus, Canon PRINT Inkjet/SELPHY, PIXMA Cloud Link, Free Layout Plus, PosterArtist Lite (PC Only), PosterArtist online Version (PC and MAC), Media Configuration Tool, Quick Utility Toolbox, Wi-Fi® Connection Assistant, and Printer Update Utility |
| <b>Operating System</b>            | 32-bit: Windows® 7/8.1/10<br>64-bit: Windows 7/8.1/10/11, Windows Server 2008 R2, 2012, 2012 R2, 2016, 2019, 2022<br>Mac: macOS v10.14.6 - macOS v12.x  |
| <b>Print Language</b>              | SGRaster  |

|  |   |
|--|---|
| <b>Interface</b>                                 | <b>Standard (Built-in):</b> Hi-Speed USB, Wi-Fi® (Wireless LAN, 2.4/5 GHz, IEEE 802.11b/g/n), Wired LAN (100BASE-TX)/(10BASE-T)■  |
| <b>Acoustic Noise</b>                            | <b>Operation:</b> 42.5 dB (A)<br><b>Standby:</b> 35 dB (A) or Less<br><b>Acoustic Power:</b> 6 Bels   |
| <b>Power Supply</b>                              | AC 100 - 240V (50 - 60 Hz)  |
| <b>Power Consumption</b>                         | <b>Maximum:</b> 28 W or Less<br><b>Standby:</b> 1.8 W or Less<br><b>Power Off:</b> 0.3 W or Less (Executive Order Compliant)  |
| <b>Certifications</b>                            | <b>Electrical Safety Regulations</b><br>C TUVus (U.S.A.)<br><b>Electromagnetic Interface Regulations</b><br>FCC Part 15B (U.S.A.)<br><b>Radio Regulations</b><br>FCC Part 15C (U.S.A.)<br><b>Environmental Certifications</b><br>International ENERGY STAR® Program (Worldwide); EPEAT Gold |
| <b>Operational Environment</b>                   | <b>Temperature:</b> 59° - 86° F (15° - 30° C)<br><b>Relative Humidity:</b> 10 - 80% (No Dew Condensation)   |
| <b>Printer Dimensions (H x W x D) and Weight</b> | <b>ASF Opened:</b> 16" x 38" x 22", Approx. 71 lb.<br><b>ASF Closed:</b> 10" x 38" x 22", Approx. 71 lb.  |
| <b>Package Dimensions (H x W x D) and Weight</b> | <b>Printer:</b> 16" x 44" x 29", Approx. 93 lb.   |
| <b>Options</b>                                   | • Desktop Basket (BU-06)<br>• Stand (SD-24)<br>• PosterArtist (PC Only)<br><b>User-Replaceable Items</b><br>• Ink Bottle: PFI-050 (70 ml)<br>• Print Head: PF-08<br>• Maintenance Cartridge: MC-32  |
| <b>What's In The Box</b>                         | Printer, Power Cord, Maintenance Cartridge (Installed), 4 Ink Bottles (70 ml each: BK/C/M/Y), Ethernet Card (Built-in), USB 2.0 High-Speed Interface, Installation Guide, User Registration Card, Media Flyer, Warranty Statement   |

\* Line accuracy repeatability is guaranteed after a user performs necessary adjustment and under the same environmental conditions. Applies to media for line drawing (Plain Paper and Coated Paper) only.

■ Wireless printing requires a working network with wireless 802.11b/g or 802.11n capability. Wireless performance may vary based on terrain and distance between the printer and wireless network clients.

# Canon

[usa.canon.com/imagePROGRAF](http://usa.canon.com/imagePROGRAF)



As an ENERGY STAR® Partner, Canon U.S.A., Inc. has qualified this model as meeting the ENERGY STAR energy efficiency criteria through an EPA recognized certification body. ENERGY STAR and the ENERGY STAR mark are registered trademarks owned by the U.S. Environmental Protection Agency. Canon and imagePROGRAF are registered trademarks of Canon Inc. in the United States and may also be registered trademarks or trademarks in other countries. All other referenced product names and marks are trademarks of their respective owners. All printer output and screen images are simulated. Specifications and availability subject to change without notice. Not responsible for typographical errors.

©2022 Canon U.S.A., Inc. All rights reserved.

1222-TC200F-PDF-IH

